



# Elevate Your Property This Fall

## A MUMS INSPIRATION GUIDE

Fall is a key time for commercial properties as routines resume and first impressions count. Whether it's a retail site, office park, or residential building, seasonal landscaping quietly shapes how people perceive your space. Mums are a simple, striking way to refresh — hardy, affordable, and vibrant just as other landscapes begin to fade.

### Why Property Managers Should Care

**Tenant attraction and retention are top priorities — and mums help deliver:**

**Show you care:** Fresh plantings signal a well-managed, professional site.

**Boost engagement:** Seasonal colour enhances the sense of place and draws people back.

**Add curb appeal:** Bold autumn hues bring warmth to even the most utilitarian spaces.

**Stand out:** As summer fades, mums keep your property vibrant and memorable.

### How to Use Them - Beyond the Planter

**Entryways:** Flank doors or reception areas for a warm welcome.

**Signage & driveways:** Use colour to highlight key access points.

**Courtyards & patios:** Pair with grasses or evergreens for a rich, fall look.

**Retail & mixed-use zones:** Add visual interest that draws foot traffic and builds pride.

**Industrial facades:** Soften hardscapes with simple, low-maintenance beds.

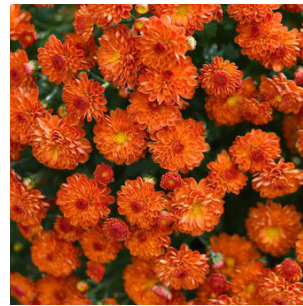
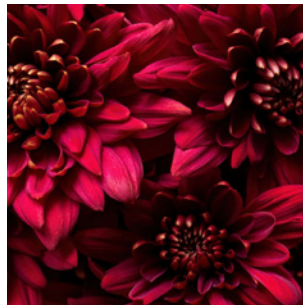




# Colour palette: designing with Fall mums

Mums are available in an array of warm, welcoming fall tones:

- Bold burgundy
- Rusty orange
- Golden yellow
- Soft cream & white
- Vibrant purple
- Soft pink & violet



## Inspiration schemes

- **Classic autumn:** combine yellow and orange mums with rustic planters and straw elements.
- **Elegant neutral:** mix creamy white mums with silver-leaved dusty miller and pale ornamental grasses.
- **Warm & bold:** pair burgundy and bronze mums with deep green foliage and trailing ivy.



**Tip:** cluster colours for big visual impact. Single-colour planters make bold statements, while mixed tones feel layered and inviting.

## SEASONAL ACCENTS

# Welcoming Thanksgiving & Halloween

**Planters do more than decorate; they show care for your property and community. Here's how to create seasonal displays that are welcoming and respectful of the landscape.**

### Thanksgiving

We like to add mums alongside cabbages, kale and berry branches. Tenants have commented on our use of festive corn, creating a harvest feel at work.

### Halloween

We look for deep purple or bright orange mums with darker grasses or trailing vines. We can even add mini pumpkins or lanterns for a hint of playfulness.

### Sustainable touches

We can include native fall perennials, like asters or goldenrod to help pollinators through the season. Drought-tolerant grasses or sedums help reduce water use and upkeep. Choosing local plants shows a commitment to caring for the land, which puts your corporate values in action.

A thoughtful fall planter can brighten an entrance, show your care for tenants and visitors, and highlight your respect for nature, all while adding seasonal beauty to your property.



We'll help you elevate your grounds this fall – from entryway accents to full-site upgrades, design to upkeep – all with your leasing goals in mind. Call us today for a quote:

**Roger Hamilton-Smith**  
roger@strathmore.pro | 438 998 4334  
www.strathmore.pro

